



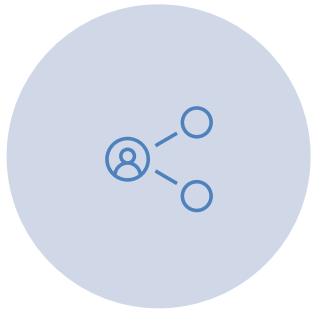
Optimizing Navigation in SharePoint | Connect and Organize Your Communication Sites

Presented by: Nina Adams, Produced by Stephanie Kingslien Mytech Partners

Quick Takes

- *Why SharePoint navigation is important*
 - *Planning your hub site navigation*
 - *Setting up your navigation*

Optimizing navigation in SharePoint



PURPOSE OF THIS SESSION –
CREATING A UNIFIED
NAVIGATION EXPERIENCE



NAVIGATION CONSIDERATIONS



DEMONSTRATION:
SET UP YOUR HUB SITE IN THE
SHAREPOINT ADMIN CENTER

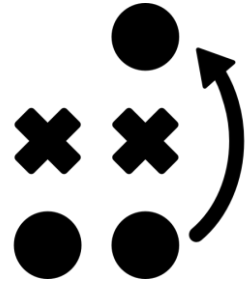


Q&A

One Minute about Mytech



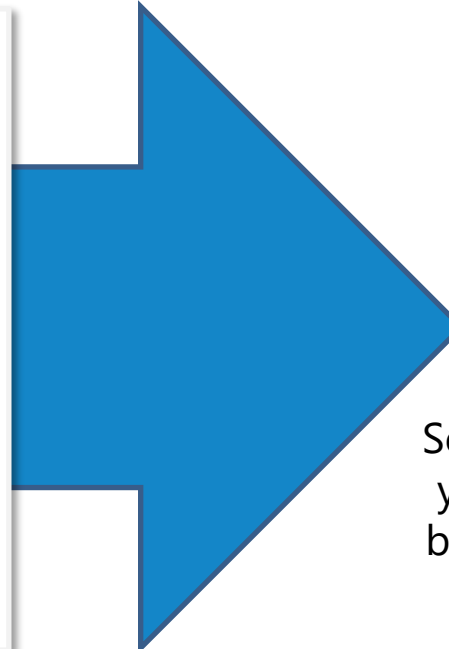
Business & Technology Consultants that serve small to medium-sized businesses



Help you implement a proven IT strategy in alignment with your business goals



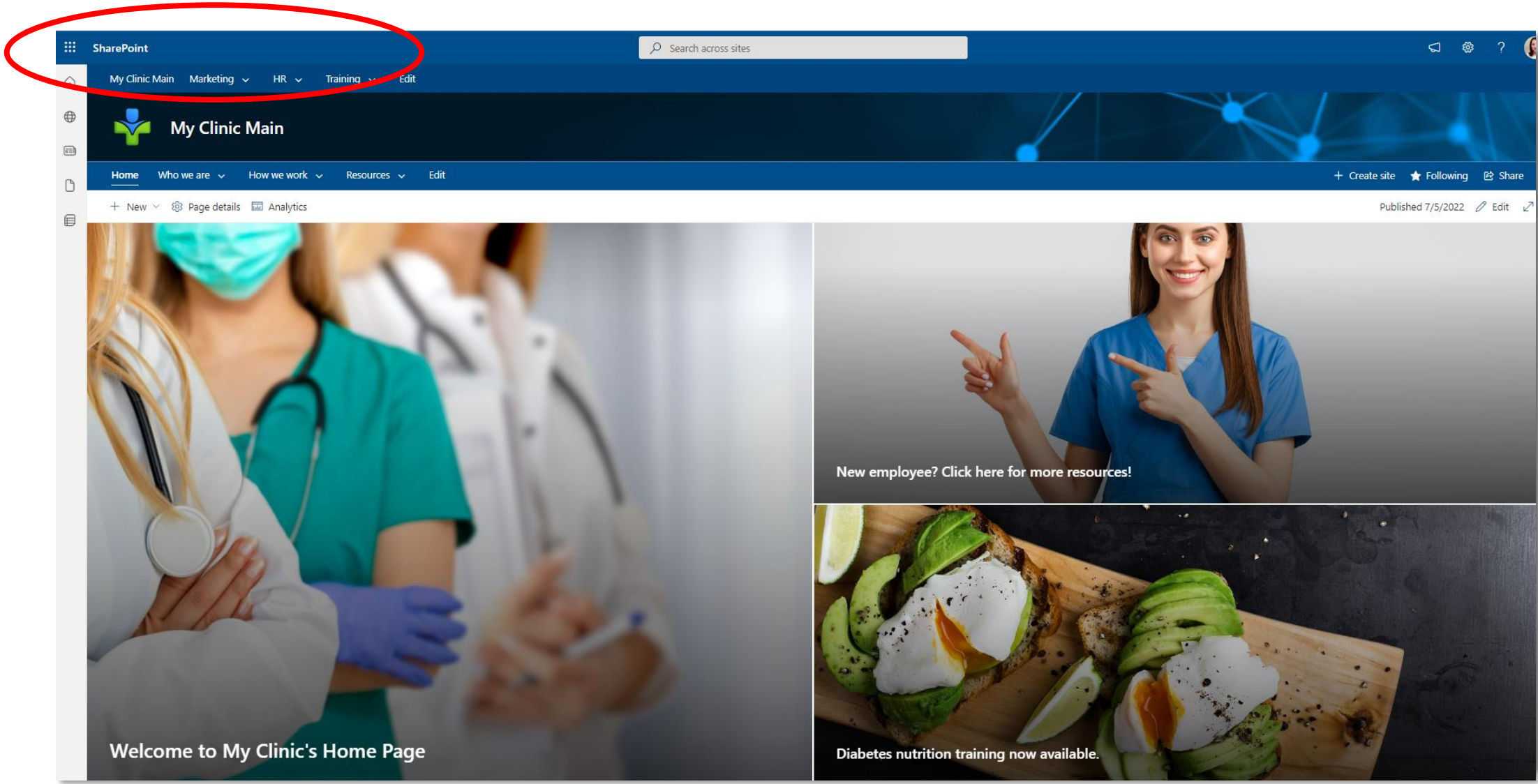
Remove IT Challenges



So you can focus on serving your customers better and be more adaptable to other business challenges.

Our clients achieve 4x more value and productivity from their IT investments.

Why SharePoint navigation is important



SharePoint navigation - Key considerations



Organizing

- Grouping logical and similar topics
- E.g., new employee onboarding

Labeling

- Writing clear labels your users will understand

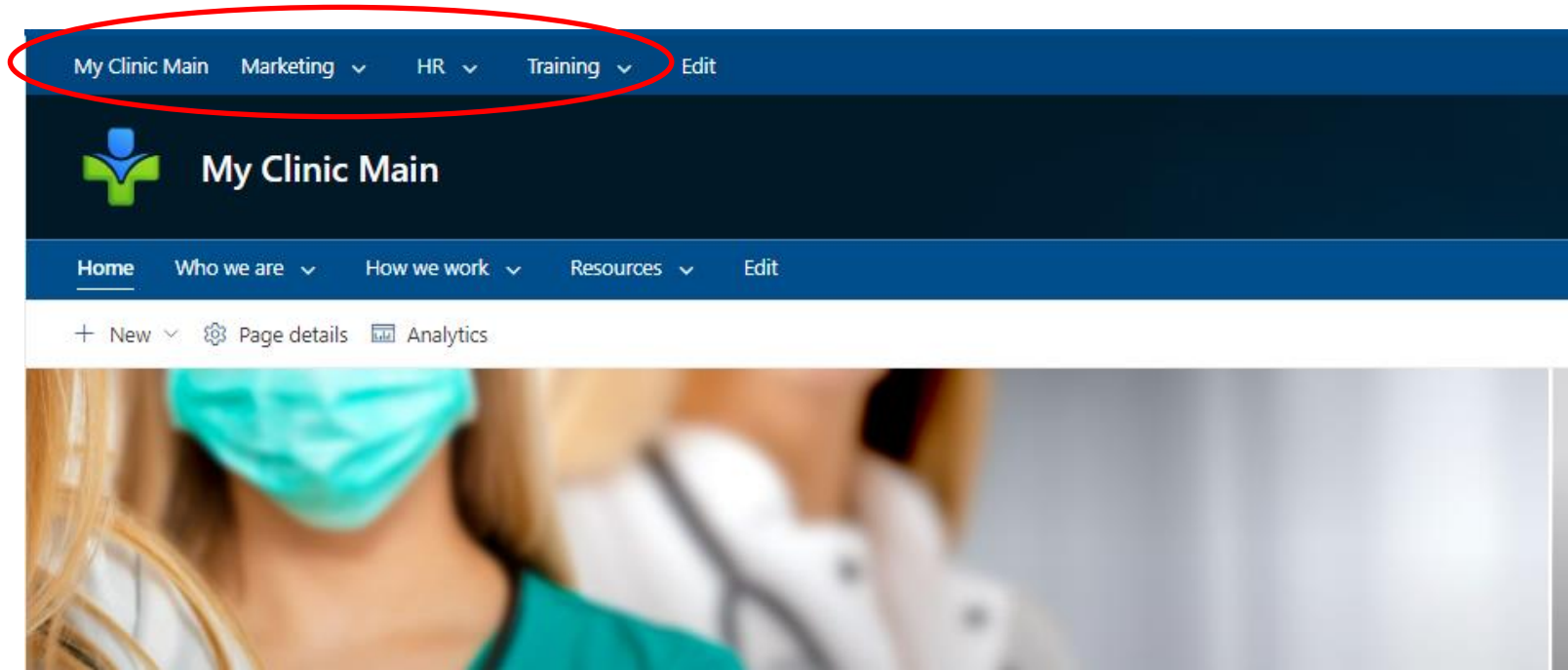
Usability

- Users' ability to navigate end to end

Findability

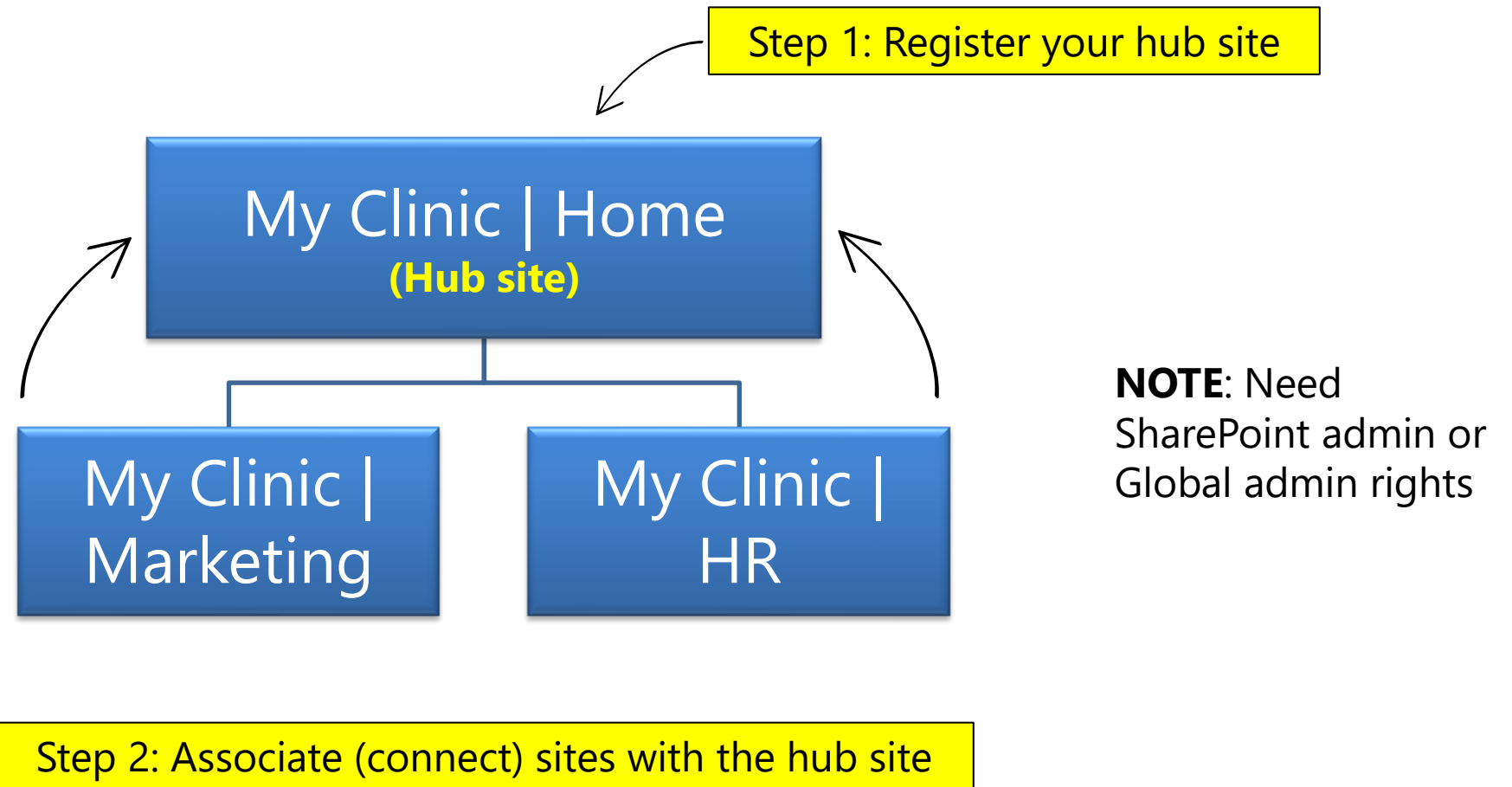
- Can users quickly find what they need

What is a SharePoint hub site?



- Hub site connects multiple SharePoint sites under one navigation umbrella
- Applies common navigation, branding & site structure
- Aggregates content/news from associated sites
- Search across associated sites

Planning your navigation



Solicit feedback

- Recommend creating a focus group – do they find navigation intuitive?
- Test your navigation with different users / different groups
- Make changes as necessary





Demonstration: Setting up your hub site in SharePoint

Summary



Take the time to plan



Create a focus group for feedback



Test, test, test! Change where necessary

Join us for Future Events



Please Subscribe to our
YouTube Channel or
Follow us on LinkedIn



Share these Events with
those who can benefit



Join us for Future
Events:
[Mytech.com/events](https://mytech.com/events)



Every Other Month
Power User Group
Sessions

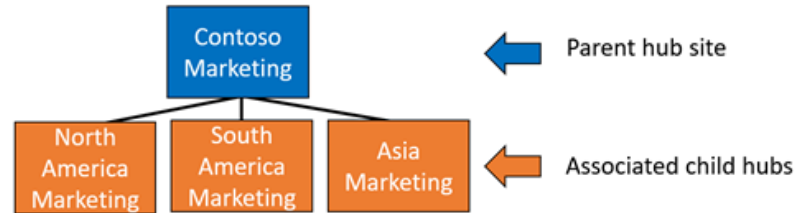


Thank you for Attending!
Open for Questions...

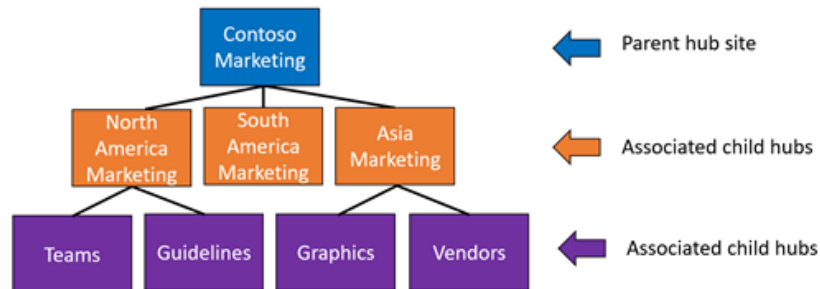
Presented by: Nina Adams, Produced by Stephanie Kingslien Mytech Partners

Associated hubs & child hubs

Basic hub association diagram:



The following diagram illustrates how hub sites can be associated to other hubs and what site content will appear in search for users searching on any of these sites.



- **Parent hub (level 1):** Think of associated hubs on level one as "Parent" hubs that determine the search scope for peer associated hubs.
- **Associated child hub (level 2):** These hub sites are already associated to the parent hub and content within these sites will appear when users search at any of these hubs.
- **Associated child hub (level 3):** This level (and all preceding levels) of peer associated hubs behaves the same way as the first level. Content on sites beyond level 3 will not appear in search results.